



Sammode × Stefan Diez  
present the new range

# MOD



Sammode

Press kit july 2020

## The new MOD range

**For more than 50 years, thanks to the success of its tube lights, Sammode has built itself a peerless reputation in the field of strip lighting. It has now channelled this expertise into spot lighting and, after three years of intensive research, is launching its new MOD range of lights, the result of a fruitful collaboration with the German designer, Stefan Diez.**

## The Sammode DNA

If there is one product on which Sammode can be said to have forged its reputation, it is clearly its tube lighting. In 50 years of existence, this “tube” has constantly been made to evolve, to cater to a multitude of new contexts, without ever compromising its authenticity.

What are the ingredients of this popularity? Well, there are its “Made in France” credentials, the quality materials and unparalleled durability, the minimalist aesthetics and the ultimate quest for functionality. *“This powerful ‘genetic code’ makes a Sammode tube an emblematic product, an archetype even,”* says Stefan Diez. *“It was our intention, in developing the MOD range, to make sure we stayed true to this ‘genetic code’.”*

With anatomical rigour, Diez has entirely dissected the Sammode tube and meticulously analysed its constituent components: gear tray, light source, tube housing, housing closure, fixture. *“If we don’t want to let technology dominate us, we need to understand it,”* says the designer with resolve. *“It is also the only way of then being able to push the envelope as far as possible.”*

## The ingenuity of Stefan Diez

With this new type of exceptional modularity, Stefan Diez has not come up with just another spot light, but has conceived an innovative system with a broad architecture and extreme technical complexity which he calls “The Universal Tool Box”. *“The MOD range looks to perpetuate the genetic code and the design logic that are such a precious part of the famous Sammode tube,”* says the designer.

The originality of this spot lighting lies in its composition. It is made up of four key elements: a fixture (wall, ceiling and suspension, or on rail), a twin hoop (for orientation adjustment and cable-free power supply), a main body (containing the heat sink, the housing for the light source and the light assembly base), and lastly, an accessory (reflector, deflector or diffuser).

The advantages of the MOD range are legion, starting with a power supply to the main body with no electric wiring and flexible orientation, not to mention a judicious system of “accessorisation”. Designed in different materials and finishes—perforated aluminium or extruded glass—these accessories give it a subtle and contemporary touch of refinement.

*“Stefan Diez manages to inject a lightness of touch into the technique,”* is the assessment of the Normal Studio duo, in charge of artistic direction for Sammode. *“He has drawn on the codes of highly industrial objects to create new usages. This system of accessories offers a sensitive, more decorative dimension to what would otherwise be dry and technical.”*



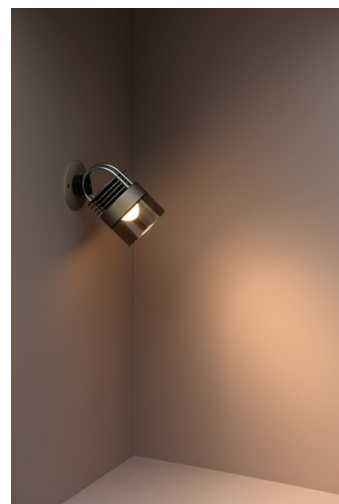
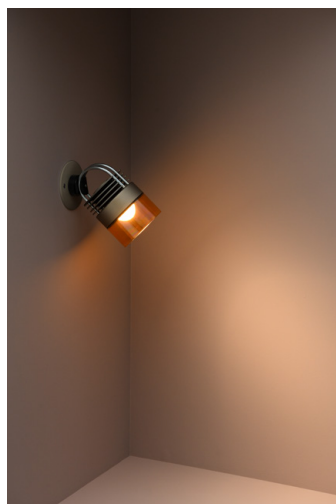
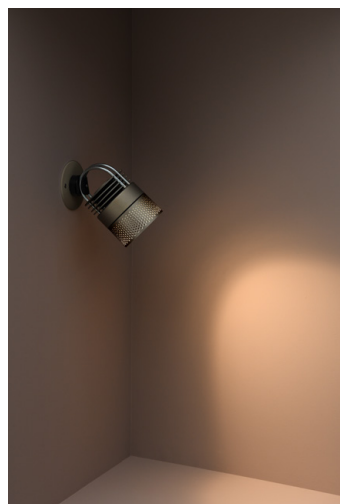
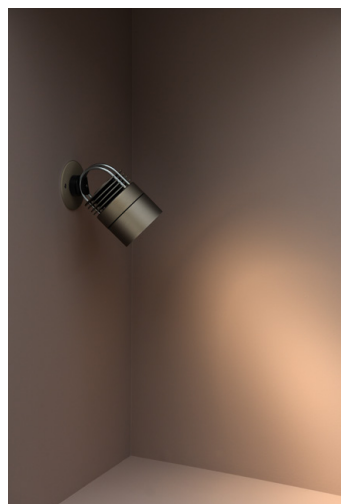
## The universality of the MOD range

The MOD range is a modular spot lighting system.

Suspended, wall-mounted or on a rail, fitted in the ceiling or in a wall, the MOD light is ideal for all kinds of situations and applications, from the commonest to the quirkiest, making it a universal spot lighting tool.

Initially available in a 100 mm diameter, the MOD range now comes in 238 variations. These can be broken down into different configurations of beams, power levels, colour temperatures and control modes. This makes for around a staggering 30,000 possible versions!

Discreet, modular and durable, as well as being ingenious and refined, the MOD range is ideal for architecture: whether it be public or residential spaces, hotels or restaurants.

































## Who is Stefan Diez?

Stefan Diez was born in 1971 in Freising, near Munich (Germany), into a family of joiners, of which he represents the fourth generation. He continued the family tradition by training as a cabinetmaker. Between 1996 and 2002, he then studied industrial design at the *Staatliche Akademie der Bildenden Künste* in Stuttgart. Before opening his own agency in Munich in 2003, he was assistant to the German designer, Konstantin Grcic. With a passion for experimentation, in particular with materials, his background as a craftsman has influenced him profoundly. Since 2018, Stefan Diez has been in charge of the Industrial Design department of *Die Angewandte*—the University of Applied Arts—in Vienna, Austria.

## Stefan Diez on his meeting with Sammode

“The path taken by Sammode is quite remarkable. Thanks in particular to the Contract sector, the company has moved successfully from industry to architecture and design, to the extent that the industrial tube light has today also become a lifestyle product.”

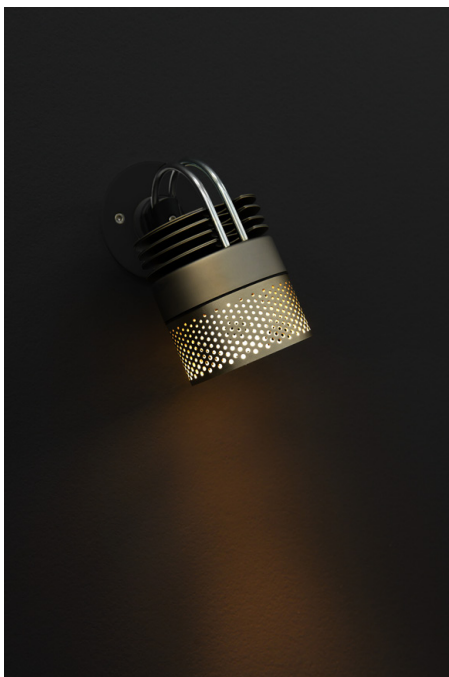
“The way we met was as simple as could be. Sammode came to see me with a great story: the story of the tube lighting manufacturing process. And when I went to visit the factory at Châtillon-sur-Saône, in the Vosges, there I discovered—by way of the diverse parts assembly processes—a real design and technology logic. The factory presents itself as a toolbox: it proposes a collection of parts with which lots of different versions can be created; in other words, a system. This is what convinced me to take part in this adventure.”

“I was really interested in working with a European company, a French and family-run one at that, and which manufactures in France. There is so much know-how in Europe, and it shouldn't be that everything has to always disappear to Asia or elsewhere, otherwise jobs will go too. We designers have to participate in society in a more social way and reflect on things holistically, not just designing a product, but taking account of the entire production chain: how it is produced, where, what with and by whom. Making the decision to work in Europe also has repercussions on employment more broadly.”

## Stefan Diez on light

“A light is an essential object, since the lighting that it produces will determine the atmosphere of a place. When I design a lamp, my objective is not to compete for the title of the ‘most beautiful model’. I'm interested in the actual light: what lamp am I to design that could change the atmosphere or, conversely, what atmosphere am I going to generate by creating a particular lamp? More than the object itself, it is the light that takes centre stage or, more precisely, how the light is experienced.”

“A lamp is not a sculpture. Its form always derives from a particular logic, as it happens, from its manufacturing process. The object, whatever it may be, should be as simple as possible, since the stronger and more unique the original concept, the more elementary the forms, the more freedom we have to explore. Hence the interest in conceiving simple forms from the very start. It is then up to us to push back the limits. It is not about making a product ‘visible’; it is quite simply about bringing it into being.”



## About Sammode

Founded in 1927, in Châtillon-sur-Saône (France), the industrial family company Sammode designs and manufactures lighting solutions for the industry and architecture that have come to be seen as a benchmark.

Sammode initially supplied all market segments – households, administration offices, factories– before focusing its production on industrial technical lighting. In 1967, the company invented the Hermetic Fluorescent Tube luminaire, which quickly gathered a cult following, fit for purpose in a variety of sectors including industry, transport infrastructure, public architecture and residential. Building on its exceptional expertise in fine sheet metal work, Sammode also offers ranges of flood lights, high bays and built-in luminaires. Since the 1980s, it has applied its expertise to indoor and outdoor architectural lighting, offering ranges that combine functionality, user comfort and authentic design.

Also, with the label Sammode Studio, Sammode is developing a whole collection of designer luminaires for private residences, shops, offices, restaurants and hotels. Sammode often collaborates with architects, designers and artists to revisit its iconic luminaires, such as with Dominique Perrault & Gaëlle Lauriot-Prévost (“Pure” collection), Normal Studio (“Paname”), or Yann Kersalé (“Lö”). Sammode also offers faithful and contemporary reissues of groundbreaking designers, starting with one of the greatest French designers and interior architects Pierre Guariche (1926-1995).

With full control of the entire production chain (our Research & Innovation Centre is situated near Orléans and our production site is located since 1927 in Châtillon-sur-Saône), Sammode proclaims its French manufacturing and unique status as a designer-manufacturer loud and proud. This status guarantees the performance, functionality and quality of its luminaires, which are made on order and according to on demand configurations.

With that in mind, we have always been rejecting planned obsolescence and are committed to manufacturing sustainable, repairable, upgradable luminaires, for which we provide components and spare parts. The dimmable versions of our luminaires include a home automation technology that makes it possible to create lighting environments in a very intuitive way with no restrictions on installation.





**Press contacts for Sammode**

**Agence 14 Septembre**

**Julien Mansanet**  
**[julienmansanet@14septembre.fr](mailto:julienmansanet@14septembre.fr)**  
**Elodie Vericel**  
**[elodievericel@14septembre.fr](mailto:elodievericel@14septembre.fr)**

**T +33 (0) 4 78 69 30 95**  
**[14septembre.fr](http://14septembre.fr)**



**Sammode**

More information on  
[www.sammode.com](http://www.sammode.com)  
Readers contact: +33 (0) 143 144 145  
[studio@sammode.com](mailto:studio@sammode.com)  
Website & e-shop Sammode Studio :  
[www.sammodestudio.com](http://www.sammodestudio.com)

Sammode S.A.  
24 rue des Amandiers  
F-75020 Paris  
T +33 (0)1 43 14 84 90  
[sammode.com](http://sammode.com)